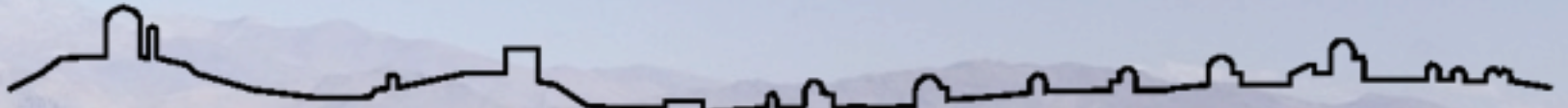




LA SILLA  
PARANAL  
OBSERVATORY



# La Silla 2010+

## Introducing a new Site Operations Paradigm

Michael F. Sterzik, ESO/Chile

JENAM, 20. April 2009

Sunday, April 19, 2009



LA SILLA  
PARANAL  
OBSERVATORY

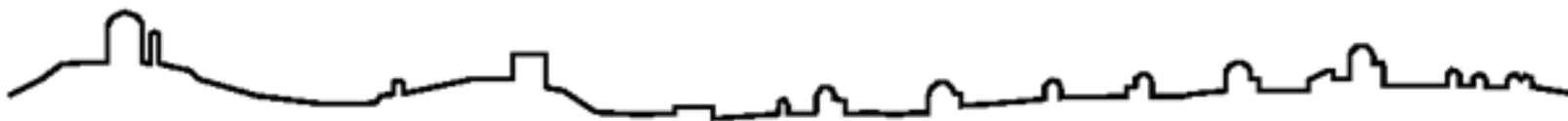


# Background

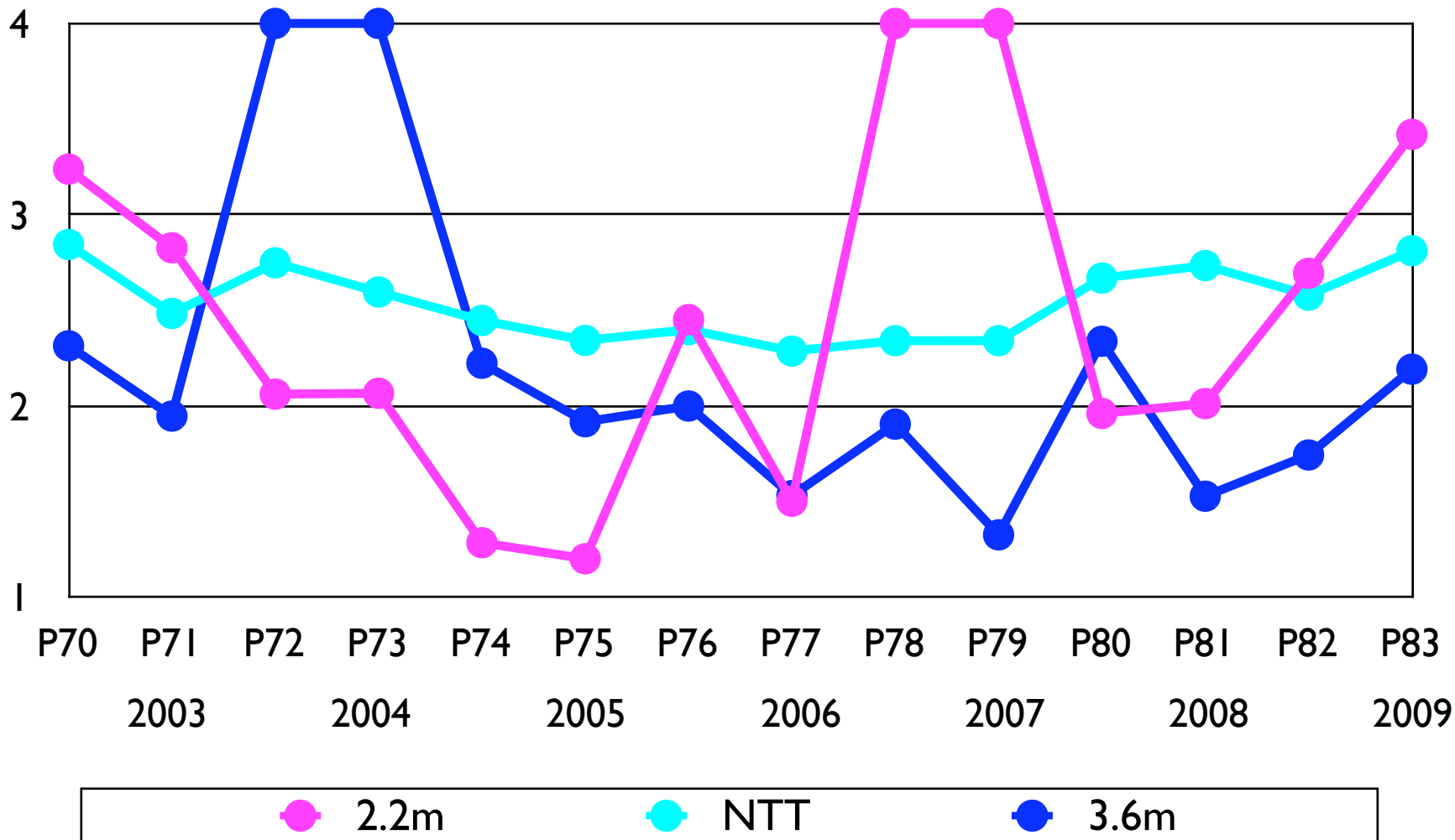
- ESO's First Observatory Celebrates 40th Anniversary
- operates state-of-the-art facilities:
  - Telescopes (3.6m, NTT)
  - Instruments (HARPS)
  - "VLT standard" (HW, SW, operation)
- hosts projects (MPG, REM, TAROT, Danish, Swiss)
- highly productive ground-based observatory



LA SILLA  
PARANAL  
OBSERVATORY



# Telescope Pressure



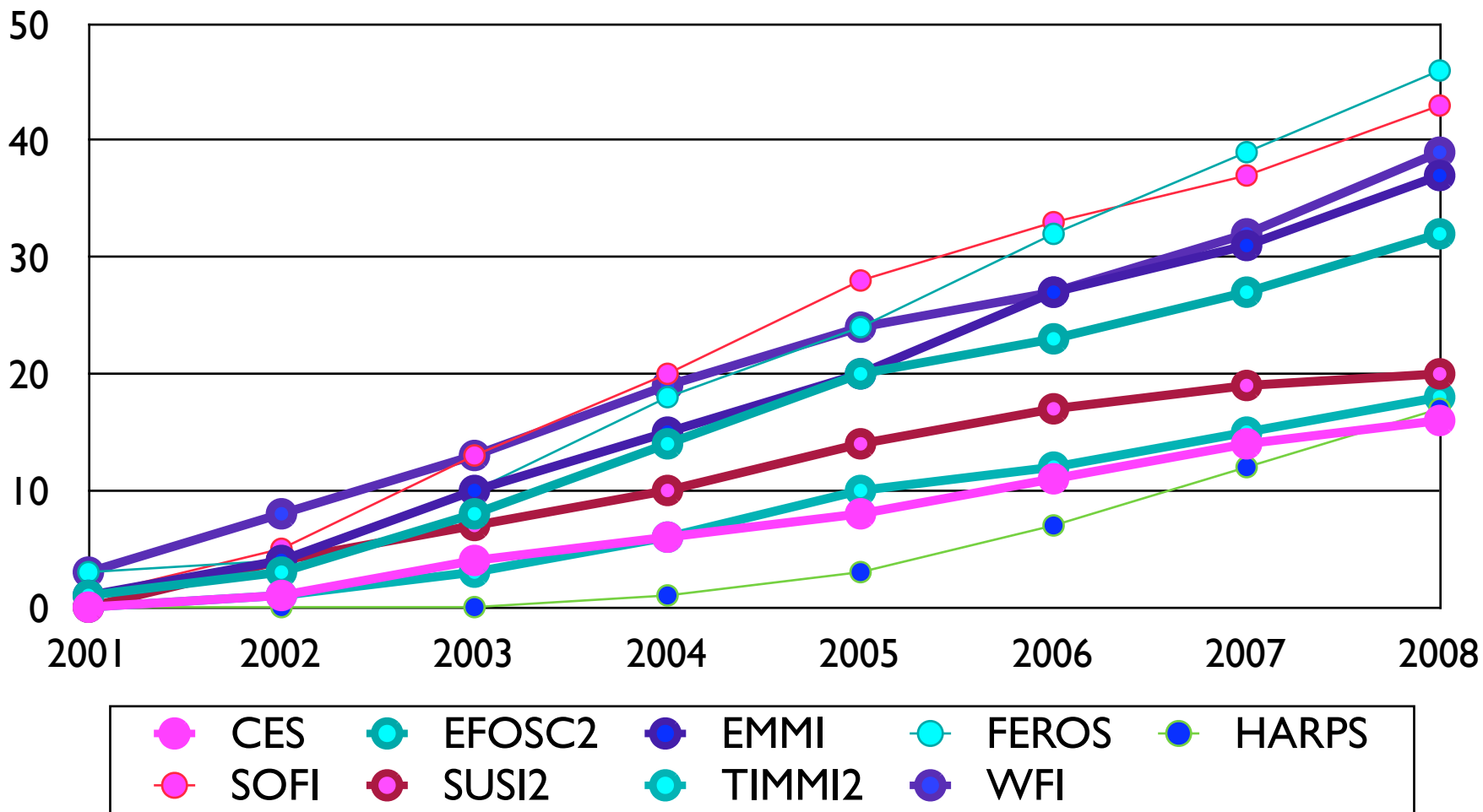
JENAM, 20. April 2009

Sunday, April 19, 2009



LA SILLA  
PARANAL  
OBSERVATORY

## Science Output: H vers Time

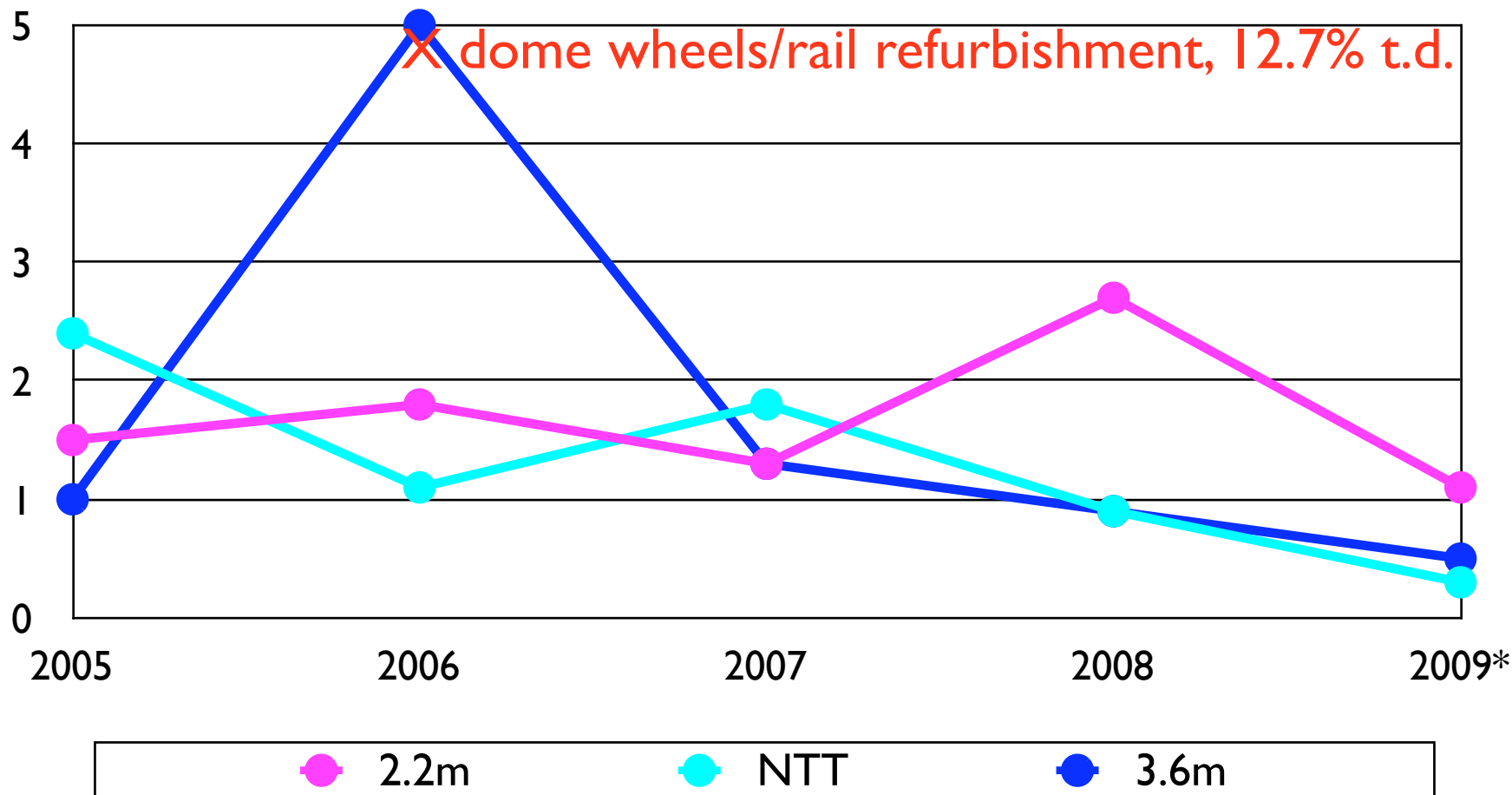




LA SILLA  
PARANAL  
OBSERVATORY



## Telescope Technical Downtime

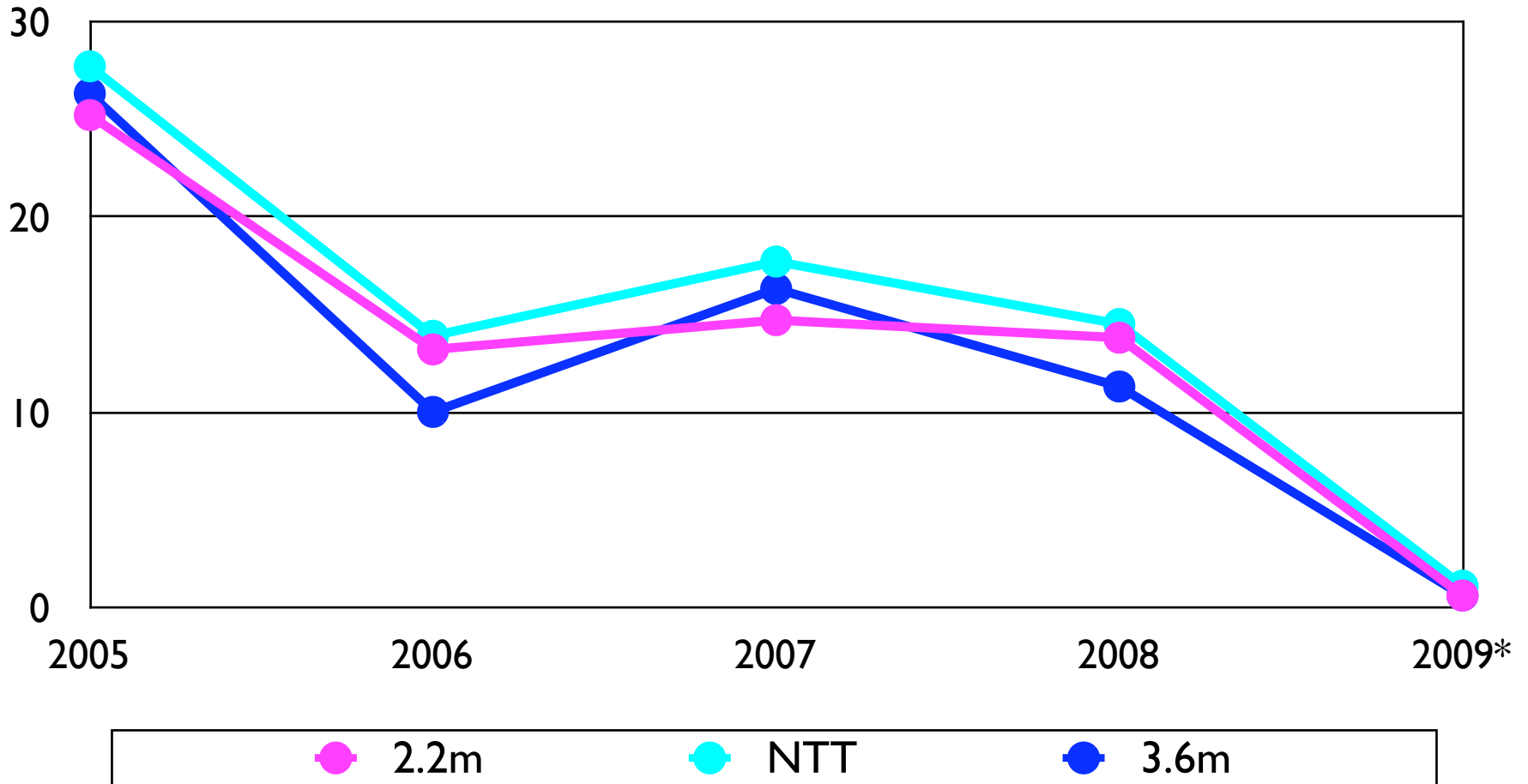




LA SILLA  
PARANAL  
OBSERVATORY

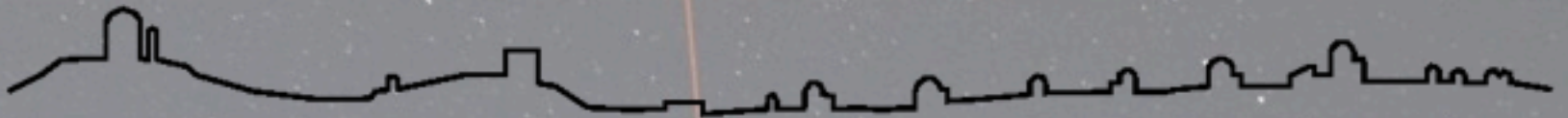


# Telescope Weather Downtime





LA SILLA  
PARANAL  
OBSERVATORY

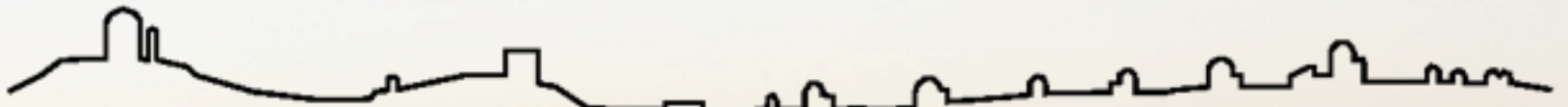


# Background

- VLT/VLTI operations/program highest priority
- ALMA construction/completion
- E-ELT development



LA SILLA  
PARANAL  
OBSERVATORY



# Background

110th ESO Council (June, 2007) resolution:

- maintain the La Silla site for the ESO community
- cost for ESO ~ 1.4M€
- “minimal” operation and support
- open for additional services





LA SILLA  
PARANAL  
OBSERVATORY



# Scenario

- La Silla remains part of the LSP Observatory Division
- ESO staff maintains the site, provides infrastructure and supports science projects
- Operate NTT (EFOSC2 + visitor) and 3.6m (HARPS)
- Visitor Mode only
- No support astronomer on site
- External funding for projects, cost neutral for ESO



LA SILLA  
PARANAL  
OBSERVATORY

EUROPEAN SOUTHERN OBSERVATORY  
Organisation Européenne pour les Recherches Astronomiques dans l'Hémisphère Austral  
Europäische Organisation für astronomische Forschung in der südlichen Hemisphäre

# La Silla - Paranal Observatory

## LaSilla 2010+ Working Groups

La Silla 2010+  
Site Operation Concept

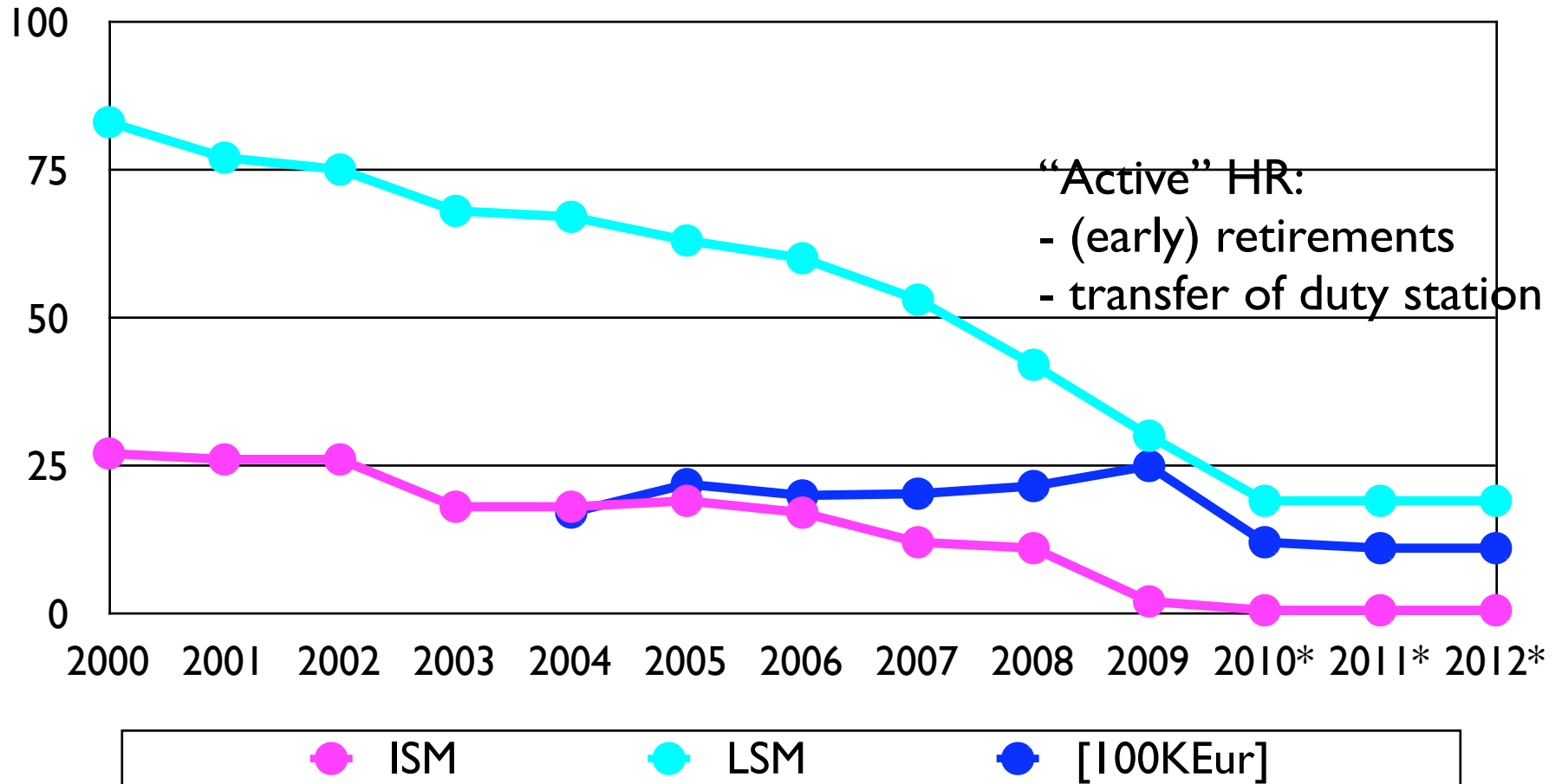
- Technical WG “Site Operation Implementation Plan”
  - \* based on realistic and accurate assumptions
  - \* represented by senior staff (12) from science operations, engineering, maintenance and logistics
- WG on “Human Resources”
  - \* staff and management representatives
  - \* “active” HR policy



LA SILLA  
PARANAL  
OBSERVATORY



## Staff and Budget

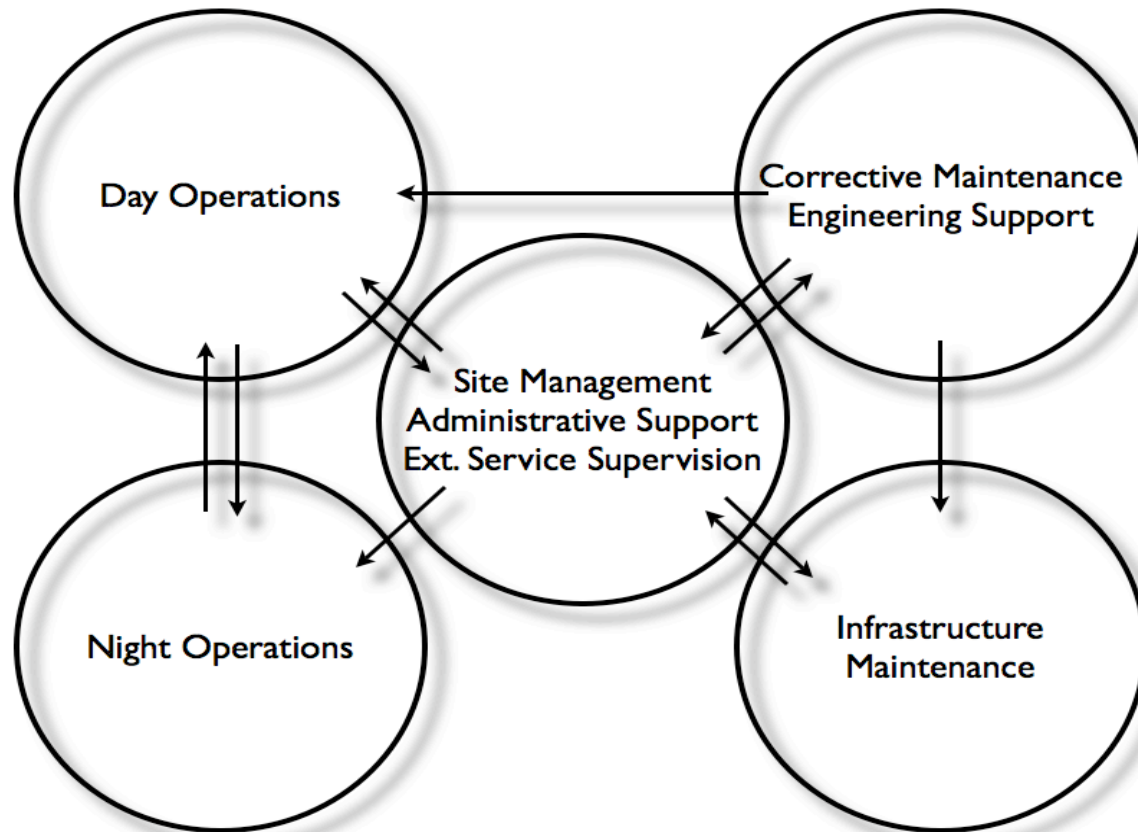




LA SILLA  
PARANAL  
OBSERVATORY



## La Silla 2010+ Site Operation Model



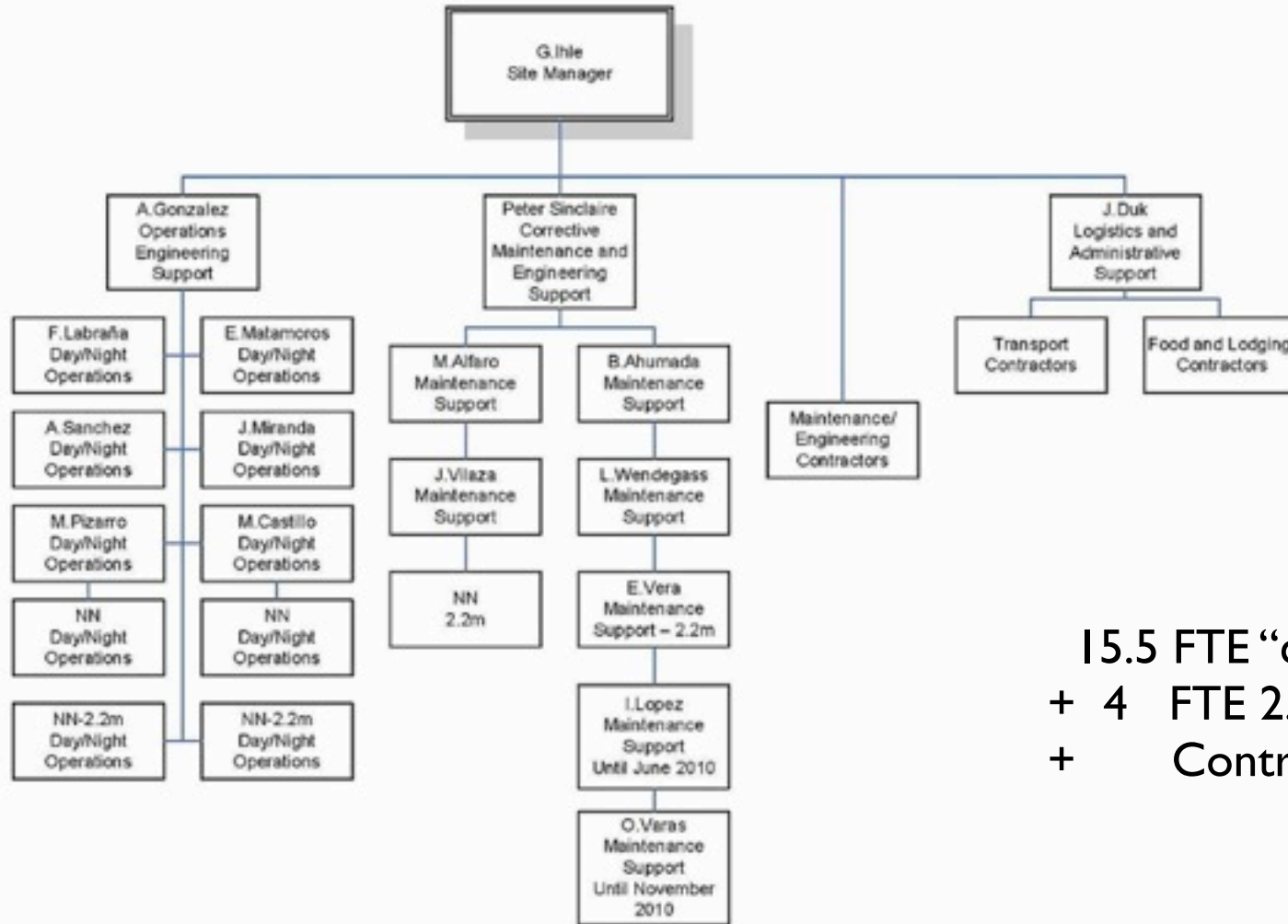


LA SILLA  
PARANAL  
OBSERVATORY



# La Silla 2010+ Organization

October 2009



15.5 FTE “core positions”  
+ 4 FTE 2.2m support  
+ Contractors



LA SILLA  
PARANAL  
OBSERVATORY



# External Services

- food, lodging, cleaning
- transport
- site security
- first aid station
- ...



LA SILLA  
PARANAL  
OBSERVATORY



# Support across the Observatory

- medium and low-frequency maintenance activities according to defined planes (eg dome wheels, compressors, HBS, coating plants, cranes)
- optics support (cleaning and maintenance)
- IT and software support (network and computer hardware)
- safety engineer
- astronomers for QC and VA remote support
- emergencies



LA SILLA  
PARANAL  
OBSERVATORY



## Success factors (up to now)

- facilities fully up-to-date
- “Big Brother” Paranal, embedded into ESO
- staff participation, dedication, excellence
- community acceptance